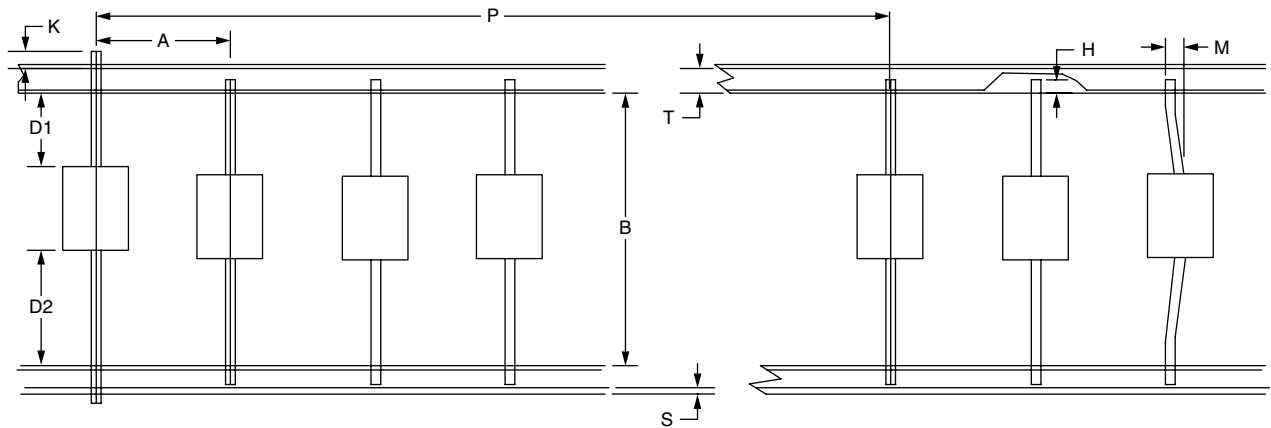
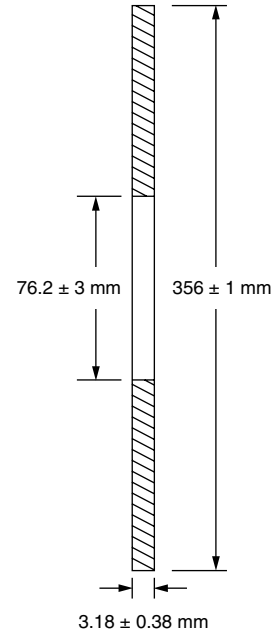
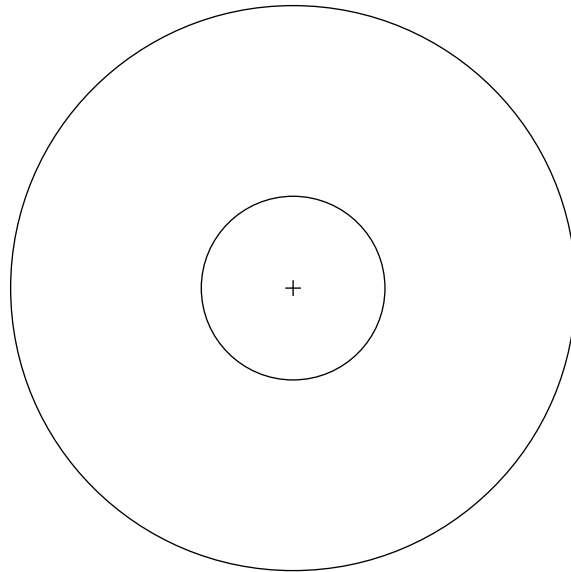


### Schottky Axial > 4 A for DO-204AR



ITEM	SYMBOL	SPECIFICATIONS (mm)	SPECIFICATIONS (INCHES)
Inside tape spacing	B	55 ± 1.5	2.165 ± 0.059
Clean lead to clean lead eccentricity	D1-D2	1.4 maximum	0.055 maximum
Cumulative pitch 6 consecutive components	P	58.5 ~ 59.5	2.303 ~ 2.343
Lead extension	K	0.8 maximum	0.031 maximum
Component pitch	A	9.8 ± 1	0.386 ± 0.039
Lead bending	M	1.2 maximum	0.047 maximum
Exposed adhesive	S	0.8 maximum	0.031 maximum
Tape width	T	6.0 ± 0.4	0.236 ± 0.016
Lead sandwich	H	3.2 minimum	0.126 minimum
Standard pack quantity		1500 pieces	